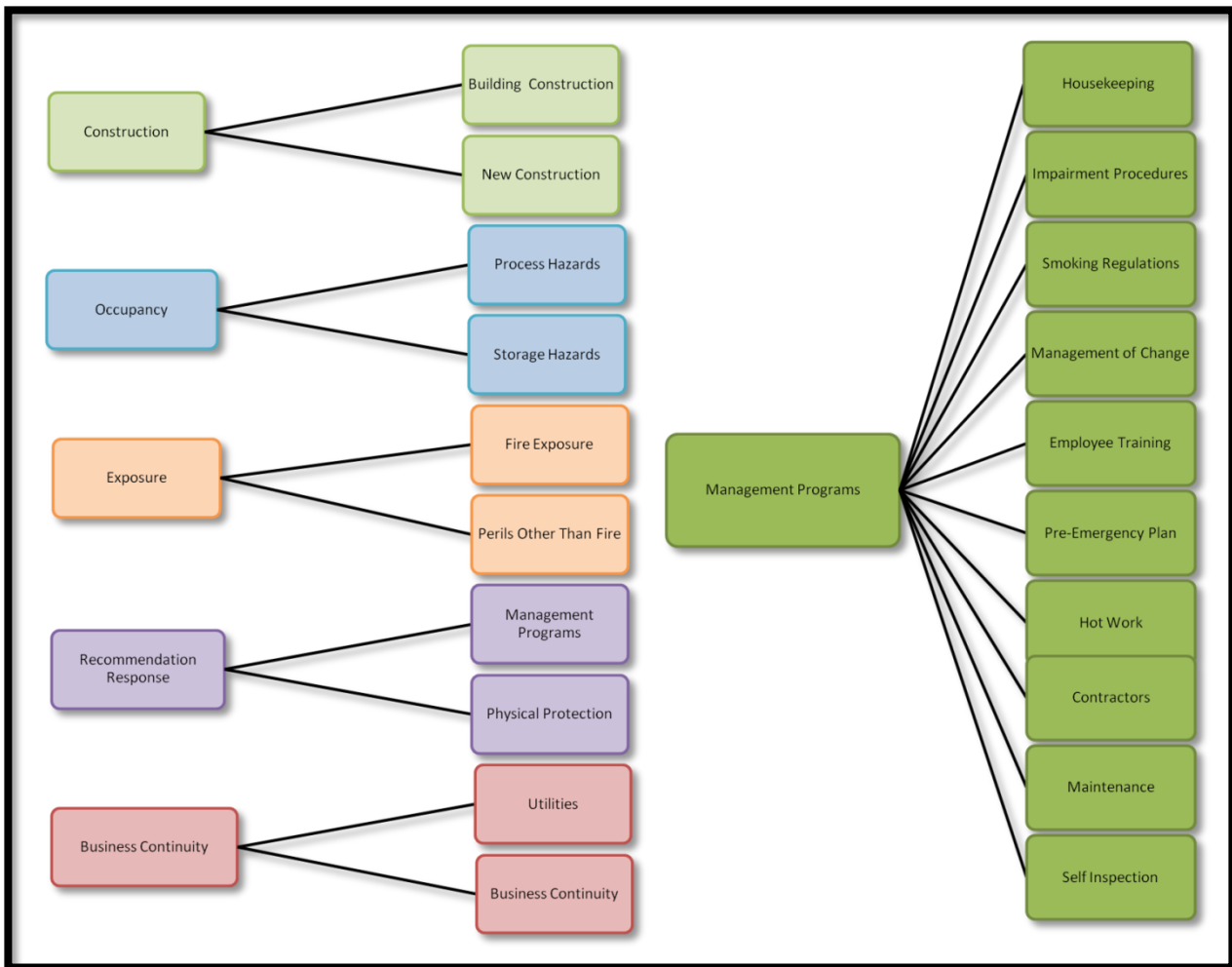


The **Sebench Risk Matrix (patent pending)** looks at 7 categories for every facility. Each category encompasses a number of different criteria, (23 in all), that are used in calculating the Sebench Risk Matrix Score. The concept is so unique, that a patent application is pending approval. Ultimately, 107 variables are evaluated for every facility. For each fire area in a facility, every category and criterion is scored independently, and a final, overall weighted score is computed for the entire facility. The resulting score is called the Sebench Risk Matrix Score.



Contact Sebench Engineering, at 678.222.0551 for more information or email: info@sebench.com.
www.sebench.com

Copyright 2009 Sebench Engineering, Inc.
 P. O. Box 451041
 Atlanta, GA 31145